



LED lighting



ABUS
CRANE SYSTEMS



Brightness 200 lx on average		Height from FFL to underside of crane track					
		5 m	10 m	15 m	20 m	25 m	
Span	10 m	Number	2	3	3	4	4
		Type	Flat 100 W 90° x 90°	Flat 100 W 60° x 60°	Flat 100 W 30° x 30°	Flat 100 W 15° x 15°	Flat 150 W 15° x 15°
	15 m	Number	3	4	4	5	5
		Type	Flat 100 W 90° x 90°	Flat 100 W 60° x 60°	Flat 100 W 30° x 30°	Flat 100 W 15° x 15°	Flat 150 W 15° x 15°
	20 m	Number	4	5	5	7	6
		Type	Flat 100 W 90° x 90°	Flat 100 W 60° x 60°	Flat 100 W 30° x 30°	Flat 100 W 15° x 15°	Flat 150 W 15° x 15°
	25 m	Number	5	6	6	8	7
		Type	Flat 100 W 90° x 90°	Flat 100 W 60° x 60°	Flat 100 W 30° x 30°	Flat 100 W 15° x 15°	Flat 150 W 15° x 15°
	30 m	Number	6	7	7	9	8
		Type	Flat 100 W 90° x 90°	Flat 100 W 60° x 60°	Flat 100 W 30° x 30°	Flat 100 W 15° x 15°	Flat 150 W 15° x 15°
	35 m	Number	7	8	9	11	9
		Type	Flat 100 W 90° x 90°	Flat 100 W 60° x 60°	Flat 100 W 30° x 30°	Flat 100 W 15° x 15°	Flat 150 W 15° x 15°
	40 m	Number	8	9	10	12	10
		Type	Flat 100 W 90° x 90°	Flat 100 W 60° x 60°	Flat 100 W 30° x 30°	Flat 100 W 15° x 15°	Flat 150 W 15° x 15°

Scope of supply

LED lighting includes switching element in the crane control device and the required number of transformers.

Measurement range

Crane track area plus 1.5m width; minus 1.0m length; height above ground 0.25m

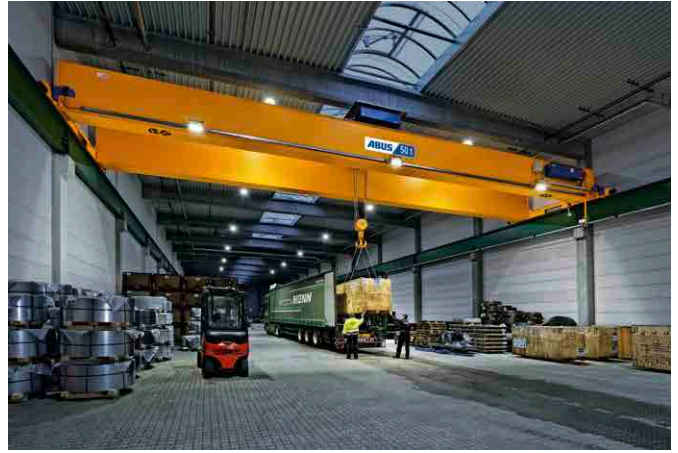
Note regarding orientation

Excerpt from workplace guideline ASR - A3.4

Production & similar activity 150 lx, packing areas 300 lx, laboratories 500 lx

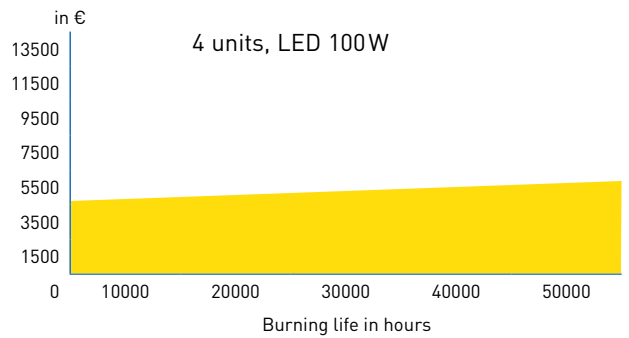
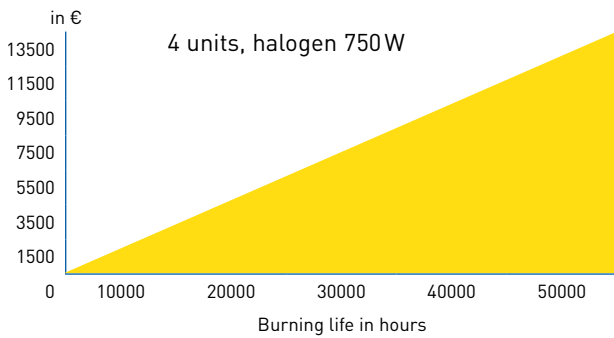
Note

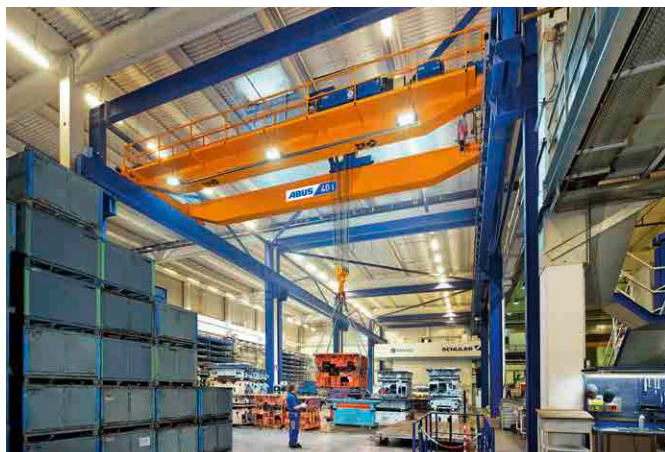
We assume that the crane lighting serves only in compensating for the shadows cast by the crane (the crane is lit by indoor lighting of the building) and therefore recommend lighting with 200 lx on average. Should a higher lighting intensity be required according to guidelines such as the ASR, lighting with 300 lx or 500 lx on average is specified on the following pages. If the crane lighting is used in areas without external lighting or if you require a higher lighting intensity, please contact us.



Brightness 300 lx on average		Height from FFL to underside of crane track					
		5 m	10 m	15 m	20 m	25 m	
Span	10 m	Number	3	3	2	3	4
		Type	Flat 100 W 90° x 90°	Flat 150 W 60° x 60°	Flat 200 W 15° x 15°	Flat 200 W 15° x 15°	Flat 200 W 15° x 15°
	15 m	Number	4	4	3	4	5
		Type	Flat 100 W 90° x 90°	Flat 150 W 60° x 60°	Flat 200 W 15° x 15°	Flat 200 W 15° x 15°	Flat 200 W 15° x 15°
	20 m	Number	5	5	4	5	7
		Type	Flat 100 W 90° x 90°	Flat 150 W 60° x 60°	Flat 200 W 15° x 15°	Flat 200 W 15° x 15°	Flat 200 W 15° x 15°
	25 m	Number	6	6	5	6	8
		Type	Flat 100 W 90° x 90°	Flat 150 W 60° x 60°	Flat 200 W 15° x 15°	Flat 200 W 15° x 15°	Flat 200 W 15° x 15°
	30 m	Number	8	7	6	7	9
		Type	Flat 100 W 90° x 90°	Flat 150 W 60° x 60°	Flat 200 W 15° x 15°	Flat 200 W 15° x 15°	Flat 200 W 15° x 15°
	35 m	Number	9	8	6	8	10
		Type	Flat 100 W 90° x 90°	Flat 150 W 60° x 60°	Flat 200 W 15° x 15°	Flat 200 W 15° x 15°	Flat 200 W 15° x 15°
	40 m	Number	10	9	7	9	11
		Type	Flat 100 W 90° x 90°	Flat 150 W 60° x 60°	Flat 200 W 15° x 15°	Flat 200 W 15° x 15°	Flat 200 W 15° x 15°

Cost comparison with an electricity price of approx. 16 cents / kWh





Brightness 500 lx on average		Height from FFL to underside of crane track					
		5 m	10 m	15 m	20 m	25 m	
Span	10 m	Number	3	3	2	3	4
		Type	Flat 150 W 90° x 90°	Flat 250 W 60° x 60°	Flat 350 W 15° x 15°	Flat 350 W 15° x 15°	Flat 350 W 15° x 15°
	15 m	Number	4	4	3	4	5
		Type	Flat 150 W 90° x 90°	Flat 250 W 60° x 60°	Flat 350 W 15° x 15°	Flat 350 W 15° x 15°	Flat 350 W 15° x 15°
	20 m	Number	5	5	4	5	6
		Type	Flat 150 W 90° x 90°	Flat 250 W 60° x 60°	Flat 350 W 15° x 15°	Flat 350 W 15° x 15°	Flat 350 W 15° x 15°
	25 m	Number	7	6	4	6	7
		Type	Flat 150 W 90° x 90°	Flat 250 W 60° x 60°	Flat 350 W 15° x 15°	Flat 350 W 15° x 15°	Flat 350 W 15° x 15°
	30 m	Number	8	7	5	7	8
		Type	Flat 150 W 90° x 90°	Flat 250 W 60° x 60°	Flat 350 W 15° x 15°	Flat 350 W 15° x 15°	Flat 350 W 15° x 15°
	35 m	Number	9	9	6	8	10
		Type	Flat 150 W 90° x 90°	Flat 250 W 60° x 60°	Flat 350 W 15° x 15°	Flat 350 W 15° x 15°	Flat 350 W 15° x 15°
	40 m	Number	11	10	7	9	11
		Type	Flat 150 W 90° x 90°	Flat 250 W 60° x 60°	Flat 350 W 15° x 15°	Flat 350 W 15° x 15°	Flat 350 W 15° x 15°

Characteristics of LEDs

- Immediate brightness
- Operating temperature: -30°C to +50°C
- Input voltage AC 100 - 240V, 50/60 Hz
- Protection class IP 55
- Colour temperature 5000 K
- Over 50,000 hours of service life
- Over 100,000 switching cycles
- Energy efficiency class A+



INFORMATION FOR THE REQUIRED LED LIGHTING

Contact name: _____

Company name: _____

Address: _____

Postcode: _____

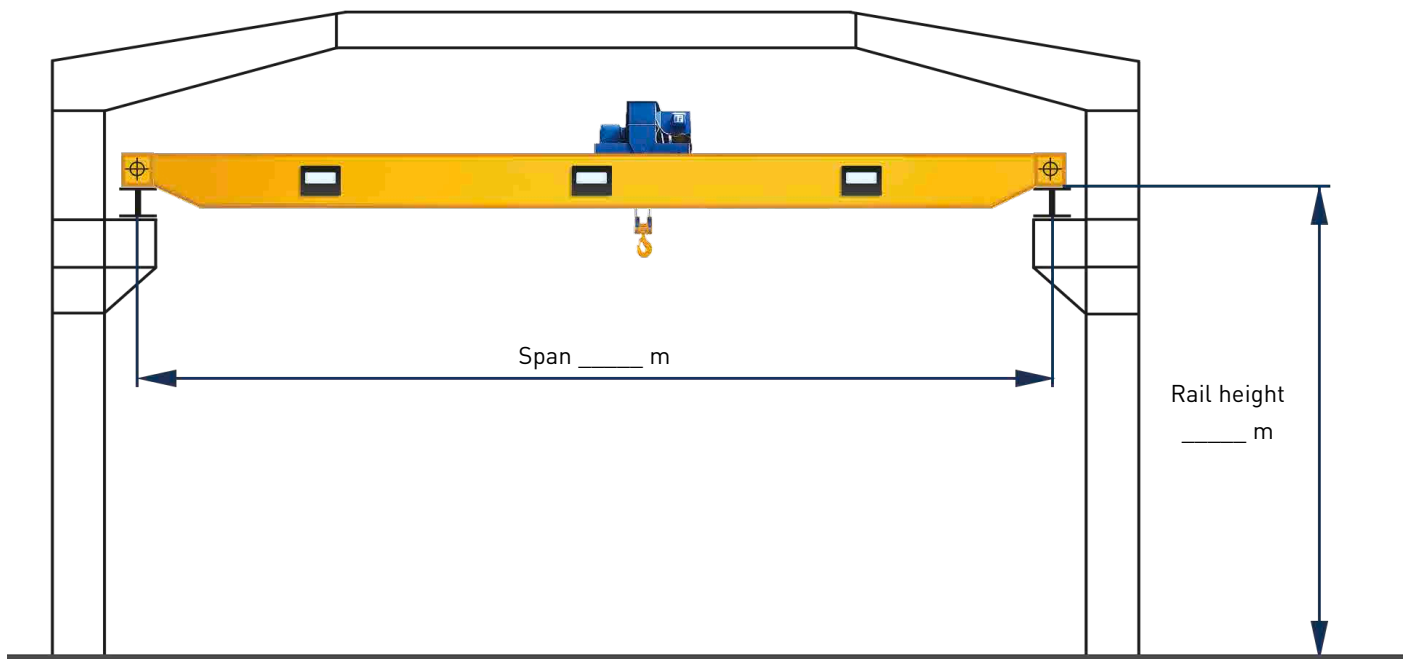
Telephone: _____

E-mail: _____

Crane number: _____

REQUIRED AVERAGE LIGHTING INTENSITY

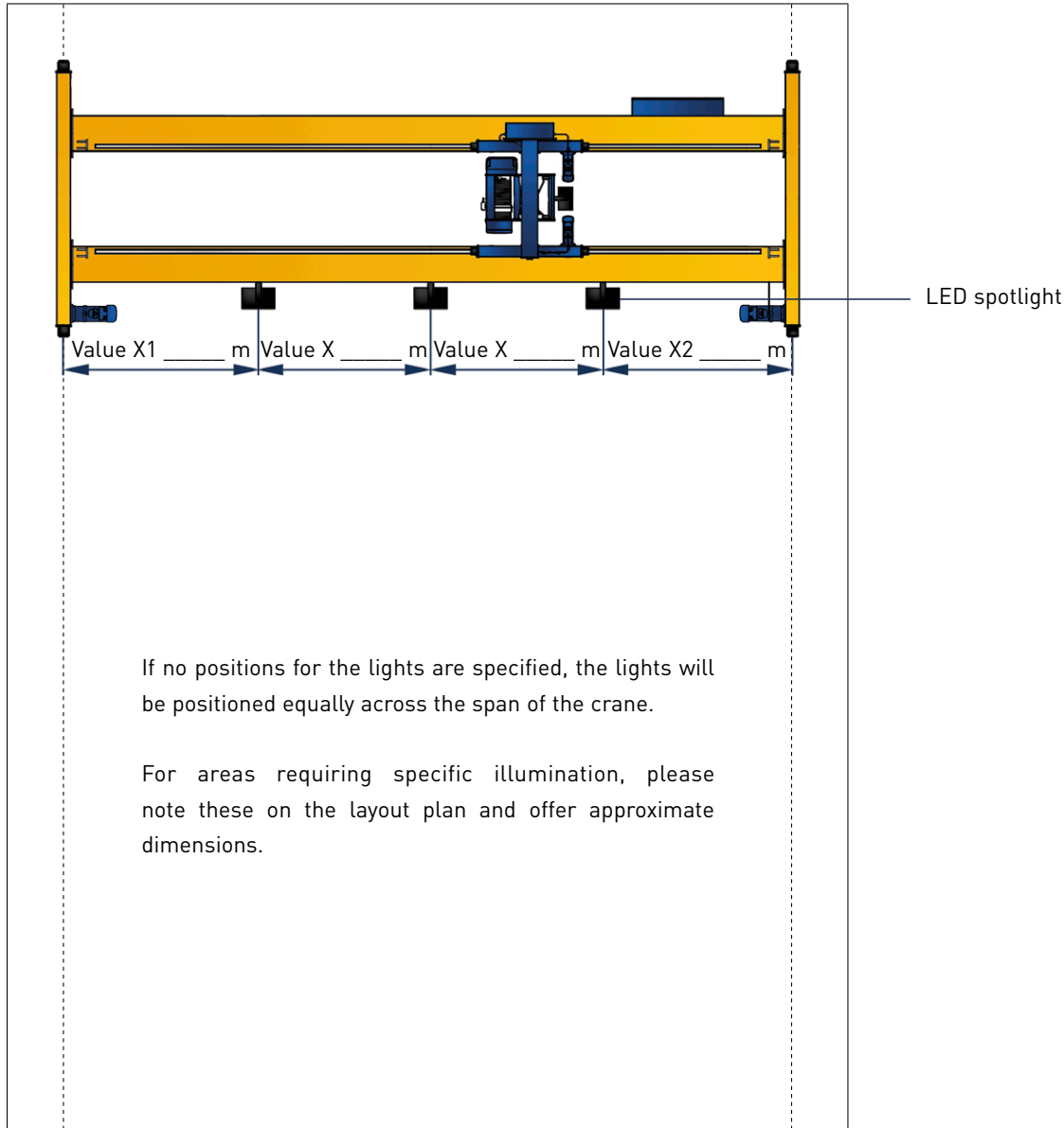
- 200 lx 300 lx 500 lx



LAYOUT PLAN OF YOUR CRANE INSTALLATION



Lighting: along the main girder on the hoist unit



AN 316198 11.21

PUBLISHER

ABUS Kransysteme GmbH
P. O. 10 01 62
51601 Gummersbach · Germany
Phone +49 2261 37-0
e-mail: info@abuscranes.com

abuscranes.com

